

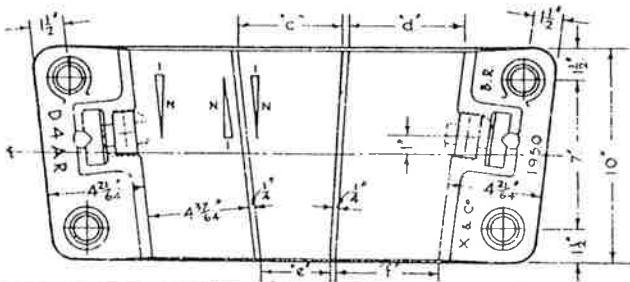
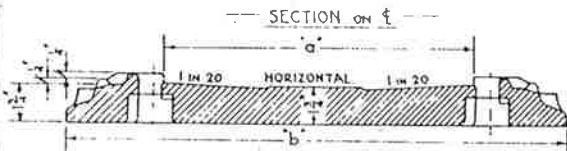
# PERMANENT WAY NOTES

BR.109FB. BS.110A.FB. & B.R. 98 FB.

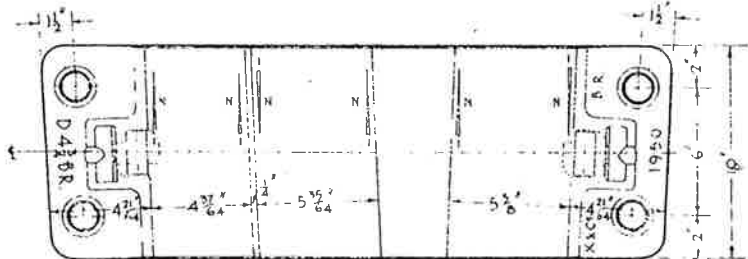
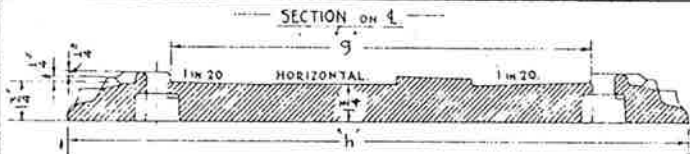
# OBTUSE CROSSING BASEPLATES.

[SHEET 1]

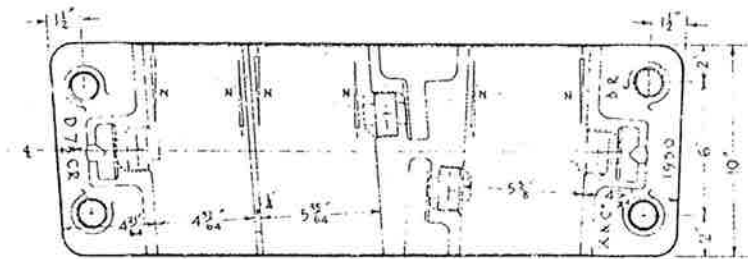
THESE NOTES ARE INTENDED FOR THE GUIDANCE AND ASSISTANCE OF STAFF ENGAGED UPON PERMANENT WAY WORK. THEY DO NOT IN ANY WAY MODIFY, SUPPLEMENT OR AMEND THE INSTRUCTIONS LAID DOWN IN E.D.I., STANDARD DRAWINGS CIRCULARS ETC., WHICH SHOULD BE REFERRED TO IN ALL CASES.



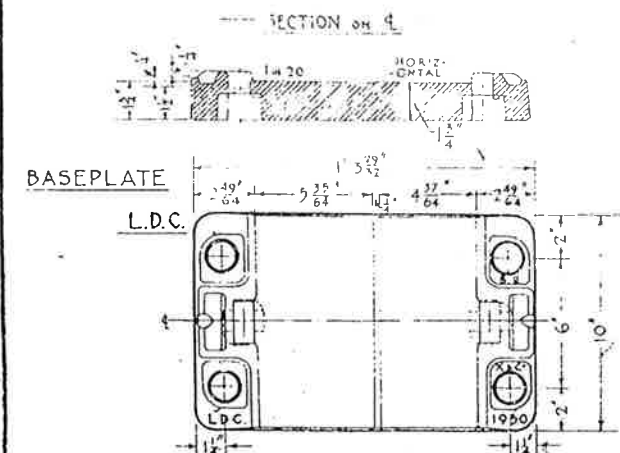
X'ING ANGLE	BASEPLATE	VARIABLES						
		a	b	c	d	e	f	inN
4	D 4 AR	1' 2 3/64	1' 10 3/64	4 3/64	5 3/64	3 3/64	4 3/64	8
4 1/4	D 4 1/4 AR	1' 2 3/64	1' 10 3/64	4 3/64	5 3/64	3 3/64	4 3/64	8 1/2
4 1/2	D 4 1/2 AR	1' 2 3/64	1' 10 3/64	4 3/64	5 3/64	3 3/64	4 3/64	9
4 3/4	D 4 3/4 AR	1' 2 3/64	1' 10 3/64	4 3/64	5 3/64	3 3/64	4 3/64	9 1/2
5	D 5 AR	1' 1 3/32	1' 10 3/64	4 3/64	5 3/64	3 3/64	4 3/64	10
5 1/4	D 5 1/4 AR	1' 1 3/32	1' 10 3/64	4 3/64	5 3/64	3 3/64	4 3/64	10 1/2
5 1/2	D 5 1/2 AR	1' 1 3/32	1' 10 3/64	4 3/64	5 3/64	3 3/64	4 3/64	11
5 3/4	D 5 3/4 AR	1' 1 3/32	1' 10 3/64	4 3/64	5 3/64	3 3/64	4 3/64	11 1/2
6	D 6 AR	1' 1 3/32	1' 10 3/64	4 3/64	5 3/64	3 3/64	4 3/64	12
6 1/4	D 6 1/4 AR	1' 1 3/32	1' 10 3/64	4 3/64	5 3/64	3 3/64	4 3/64	12 1/2
6 1/2	D 6 1/2 AR	1' 1 3/32	1' 10 3/64	4 3/64	5 3/64	3 3/64	4 3/64	13
6 3/4	D 6 3/4 AR	1' 1 3/32	1' 10 3/64	4 3/64	5 3/64	3 3/64	4 3/64	13 1/2
7	D 7 AR	1' 1 3/32	1' 10 3/64	4 3/64	5 3/64	3 3/64	4 3/64	14
7 1/4	D 7 1/4 AR	1' 1 3/32	1' 10 3/64	4 3/64	5 3/64	3 3/64	4 3/64	14 1/2
7 1/2	D 7 1/2 AR	1' 1 3/32	1' 10 3/64	4 3/64	5 3/64	3 3/64	4 3/64	15
7 3/4	D 7 3/4 AR	1' 1 3/32	1' 10 3/64	4 3/64	5 3/64	3 3/64	4 3/64	15 1/2
8	D 8 AR	1' 1 3/32	1' 10 3/64	4 3/64	5 3/64	3 3/64	4 3/64	16



X'ING ANGLE	BASEPLATE	VARIABLES		
		g	h	inN
4 1/4	D 4 1/4 BR	1' 7 3/64	2' 4 3/64	9 1/2
5	D 5 BR	1' 7 3/64	2' 4 3/64	10
5 1/4	D 5 1/4 BR	1' 7 3/64	2' 4 3/64	10 1/2
5 1/2	D 5 1/2 BR	1' 6 3/32	2' 3 3/64	11
5 3/4	D 5 3/4 BR	1' 6 3/32	2' 3 3/64	11 1/2
6	D 6 BR	1' 6 3/32	2' 2 3/64	12
6 1/4	D 6 1/4 BR	1' 5 3/32	2' 2 3/64	12 1/2
6 1/2	D 6 1/2 BR	1' 5 3/32	2' 2 3/64	13
6 3/4	D 6 3/4 BR	1' 5 3/32	2' 2 3/64	13 1/2
7	D 7 BR	1' 5 3/32	2' 1 3/64	14
7 1/4	D 7 1/4 BR	1' 5 3/32	2' 1 3/64	14 1/2
7 1/2	D 7 1/2 BR	1' 4 3/32	2' 1 3/64	15
7 3/4	D 7 3/4 BR	1' 4 3/32	2' 1 3/64	15 1/2
8	D 8 BR	1' 4 3/32	2' 1 3/64	16



X'ING ANGLE	BASEPLATE	VARIABLES		
		j	k	inN
7 1/4	D 7 1/4 CR	1' 8 3/64	2' 4 3/64	15
7 1/2	D 7 1/2 CR	1' 7 3/64	2' 4 3/64	15 1/2
8	D 8 CR	1' 7 3/64	2' 4 3/64	16



illustrations & dimensions are given for right-hand baseplates only. The left-hand baseplates will be manufactured to these dimensions also, but in form will be mirror reflections of the right-hand baseplates.

FROM R.8041. (RE/PW/41).